

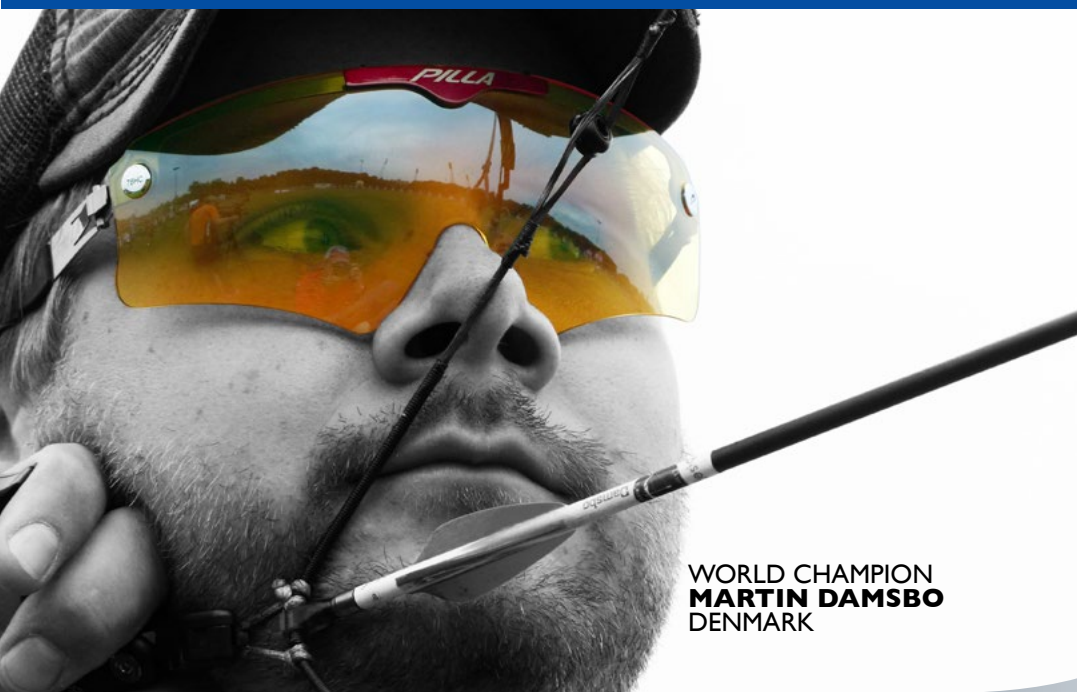


PILLA®

VISUAL EQUIPMENT FOR SPORT



WORLD CHAMPION
BRADEN GELLENTHIEN
USA



WORLD CHAMPION
MARTIN DAMSBO
DENMARK

2014 ARCHERY

HIGH DEFINITION LENS SCIENCE
FIT TO TECHNICALLY
SUPERIOR FUNCTIONAL DESIGN

www.pillasport.com 203.894.3265



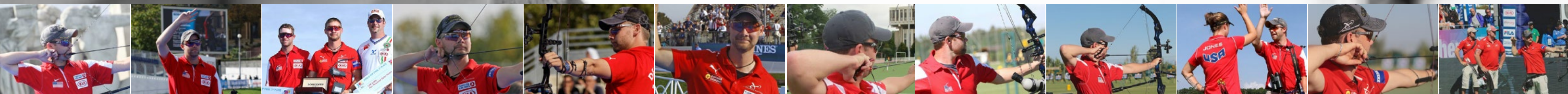


“As all archers know, perfect clarity and precise optics are critical. They can be the difference between being near the line and on it. In my opinion, no one holds a candle to the quality of a PILLA Zeiss VIVX lens. They give the added benefit of color filtration so I can see the target lines with increased precision and focus in on the yellow target center. Whether you're a FITA, Field, 3d or indoor archer, accuracy begins with the ability to perceive the target consistently.

With PILLA, I no longer have to worry about extreme sun or changing light conditions because it's so easy to change the lenses.”

Braden Gellenthien, 2013 Longines award winner for most accurate compound archer in the world.

PERFORMANCE EYEWEAR BY ARCHERS FOR ARCHERS



The Pilla Archery system was designed in tandem with Braden Gellenthien and Martin Damsbo. Pilla has the Only frame and lens system in the world specifically designed by Archers for Archers.

The functionality of the system is to provide the archer with optimal visual registration of the target, while managing light to allow the eye to relax and focus. Pilla has created a frame geometry with no nose piece, offering the shooter no visual obstruction through the nasal part of the glasses. This is critical for archers who, until now, have had to remove their sunglasses, even when shooting in bright conditions, because of frame and nose obstruction.

When an archer has to remove their eyewear to shoot, the eye is shocked and this sudden change in light adversely affects the eyes ability to remain relaxed and focused. The use of an optically correct lens system designed for sunny and low light conditions provides an efficient piece of equipment to manage the performance of the most critical element of your equipment. Your eye.

- Consistent light into the eye means impacts never vary. No more lefts and rights, **and no more eye fatigue.**
- Pilla Zeiss VIVX lenses are **optically perfect**, with more than twice the clarity of an average (polycarbonate) sunglass.
- **Easy-to-use lens changing system.** Pilla lenses are interchangeable using our patented snap-tech technology or Neodymium Magnets.
- 2 lens kits come standard with both an indoor lens and an outdoor lens, covering a **huge variety of lighting conditions.**
- Proper **light management** eliminates facial and muscle strain, allowing the athlete to relax and focus to compete at his or her full potential.



WORLD PRO STAFF MEMBER
MARTIN DAMSBO
DENMARK
FRAME - MAGNETO A
LENS - 78HC

MAGNETO A



Magneto A - The PILLA Magneto is the ultimate in performance eyewear technology for Archery. The frame is surgical steel fused with titanium, making it ultra light weight and durable. It comes packaged standard with 4 VIVX lenses to cover almost any lighting condition. (*2 of which are only available for this frame) The 22ED* lens is perfect for very bright conditions with stray light and reflective surfaces such as water and sand. The 42Enhanced Definition, the standard outdoor lens, is 20% brighter and perfect for sunny days. The 58 High Contrast* lens can be used for cloudy and rainy days. The high contrast filtration cuts through fog like a knife through butter. The 78 Enhanced Definition, sometimes referred to as the light bulb lens because it gives the impression of putting the lights back on when it's dark, is perfect for indoors or shooting at dusk, allowing the eye to make better use of the available light and reducing glare. With lenses that slide on and off using neodymium magnets, the Magneto boasts the fastest and easiest lens changing system available anywhere. Combined with its unique filtrations, this set gives the athlete an unfair advantage and is sure to be the last pair of glasses you'll ever want to buy.

LENS TECHNOLOGY

- VIVX Lenses Exceed All World Standards for Optics
- ZEISS Certified To Be Optical Perfect
- Optical Clarity Double that of Polycarbonate
- Enhanced High Definition Color Enhancement
- Refined Filtration for Maximum Visual Experience
- Superior Resolution in Lens Design
- Crystal Clear Lens—Front and Backside Multi-Layer Anti-Reflective Coatings
- Full Application of Proprietary Hydro-Pel Coatings

ARCHERY FILTRATION

- Direct Sun** - 22ED
- Medium Lighting** - 42ED
- Fog** - 58HC
- Low Light/Indoor** - 78HC
- Indoor** - 88ED

KIT OPTION:

Available with 4 lenses of your choice.



Magneto A : Cable Temple

OUTLAW X6A



Outlaw X - Carbon Fiber temples with titanium inner core can be formed to a customized fit. The forked ends are designed to wrap around and cradle the back of the head, reducing weight on the front and eliminating the need for a nose piece. The high performance megol rubber brow bar is complete with venting holes to push air down the back side of the lens and reduce any fogging. The Snap-tech lens changing system comes standard on the Outlaw X, making lens changing as easy as it gets. The 2 lens kit comes with an indoor lens (also good for low light) and an outdoor lens. The oversized lens allows for a completely unobstructed view across the nose bridge, making it the perfect archery glass. This also eliminates stray light coming from extreme angles.

LENS TECHNOLOGY

- VIVX Lenses Exceed All World Standards for Optics
- ZEISS Certified To Be Optical Perfect
- Optical Clarity Double that of Polycarbonate
- Enhanced High Definition Color Enhancement
- Refined Filtration for Maximum Visual Experience
- Superior Resolution in Lens Design
- Crystal Clear Lens—Front and Backside Multi-Layer Anti-Reflective Coatings
- Full Application of Proprietary Hydro-Pel Coatings

ARCHERY FILTRATION

- Full Sun/Medium Lighting** - 42ED
- Low Light** - 78HC

KIT OPTION: 42ED & 78HC

560A



560A: The Stainless steel frame can be formed to a customized fit. The forked ends are designed to wrap around and cradle the back of the head, reducing weight on the front and eliminating the need for a nose piece. The Snap-tech lens changing system comes standard, making lens changing as easy as it gets. The 2 lens kit comes with an indoor lens (also good for low light) and an outdoor lens. The 560 oversized lens allows for a completely unobstructed view across the nose bridge, making it the perfect archery glass. This also eliminates stray light coming from extreme angles.

LENS TECHNOLOGY

- COLORTRAST Lenses Exceed All World Standards for Optics
- ZEISS Certified To Be Optical Perfect
- Optical Clarity Double that of Polycarbonate
- Enhanced High Definition Color Enhancement
- Refined Filtration for Maximum Visual Experience
- Superior Resolution in Lens Design
- Full Application of Proprietary Hydro-Pel Coatings

ARCHERY FILTRATION

- Full Sun/Medium Lighting** - 25CB
- Low Light/Indoor** - 70CY

KIT OPTION: 25CB & 70CY



WORLD PRO STAFF MEMBER
BRADEN GELLENTHIEN
USA
FRAME - OUTLAW X6A
LENS - VIVX 42ED